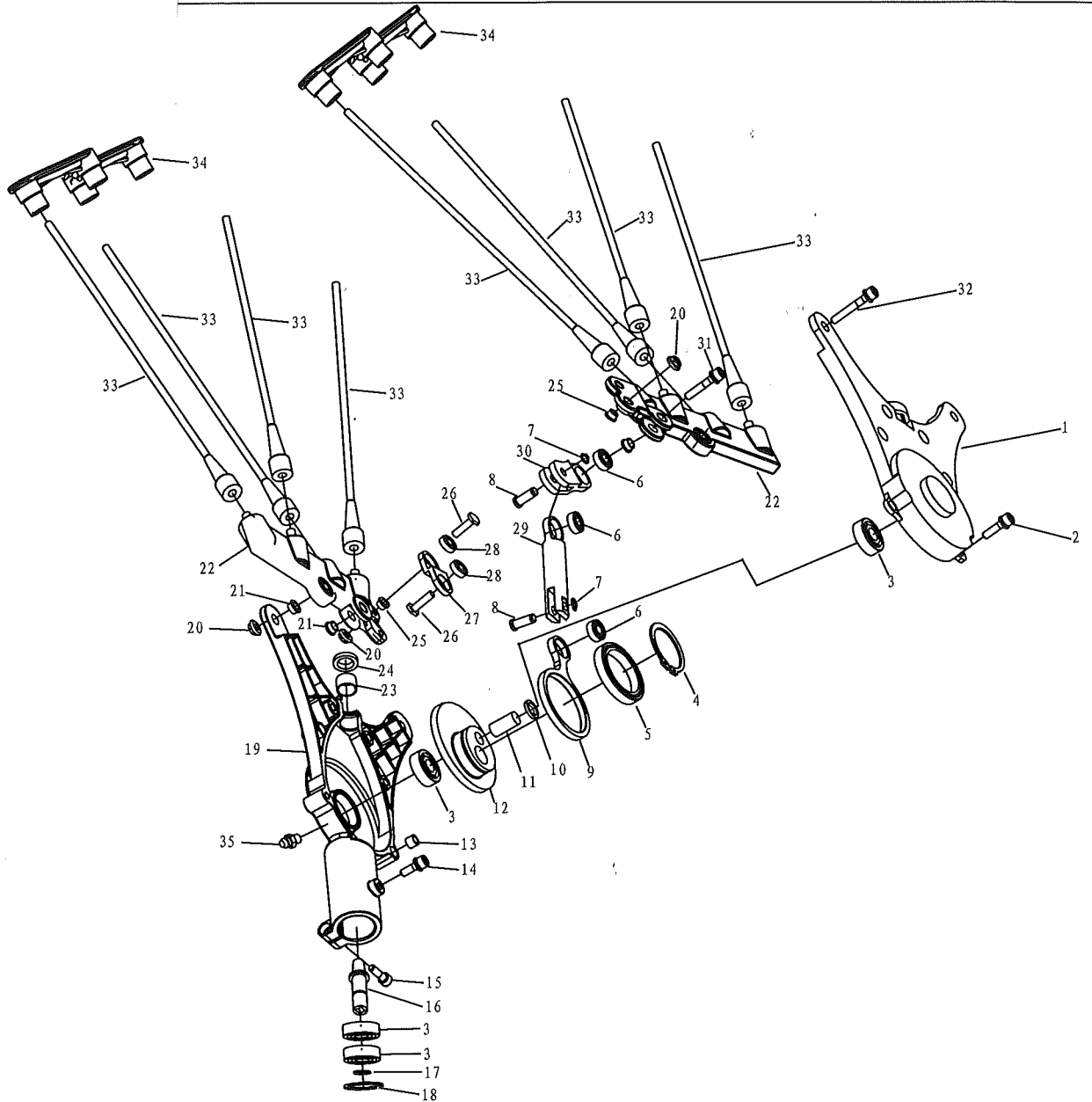


Cassis do
Vozifador

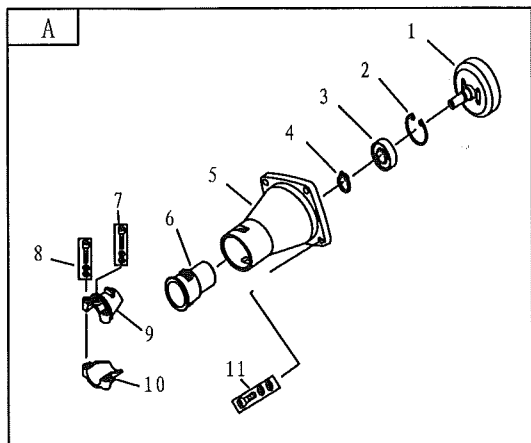
KN0406260



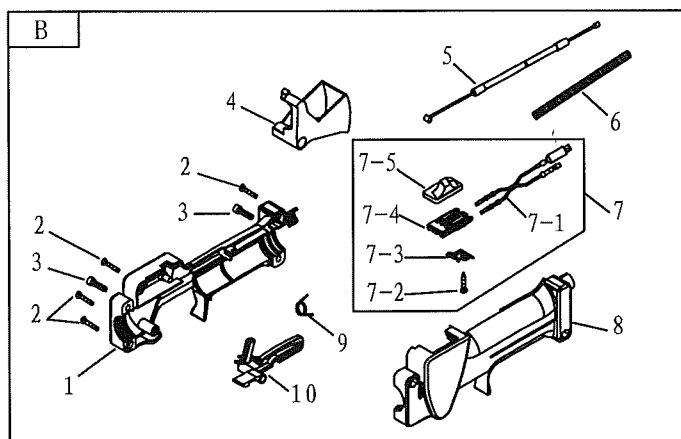
NO.	PART NO.	PART NAME	QTY.	NO.	PART NO.	PART NAME	QTY.	NO.	PART NO.	PART NAME	QTY.
1	4GS-50.1-3	Case Cover	1	14	GB/T70+GB93+GB97	Screw M5 × 16	1	27	4GS-50.1-15	Plate	1
2	GB/T70+GB93+GB97	Screw M5 × 20	6	15	GB/T70.1	Screw M5 × 20	1	28	GB/T276	Bearing 619/5-RZ/P6	2
3	GB/T276	Bearing 6000-2RZ/P5	4	16	4GS-50.1.2	Pinion	1	29	4GS-50.1-5	Drive Shaft	1
4	GB894.1	Stop Ring 35	1	17	GB894.1	Stop Ring 10	1	30	4GS-50.1-7	Plate	1
5	GB/T276	Bearing 61807-2RZ/P6	1	18	GB893.2	Stop Ring 26	1	31	GB/T70+GB93+GB97	Screw M5 × 25	1
6	GB/T276	Bearing 619/6-RZ/P6	3	19	4GS-50.1-8	Wheel Box	1	32	GB/T70+GB93+GB97	Screw M5 × 35	2
7	GB894.1	Stop Ring 6	2	20	GB/T6183	Nut M5	5	33	4GS-50.1.3	Pole	8
8	4GS-50.1-6	Shaft	2	21	4GS-50.1-12	Harness	6	34	4GS-50.1-16	Plank	2
9	4GS-50.1-9	Crank Shaft	1	22	4GS-50.1.1	Gatherer	2	35	GB1152	Fuel Cup M6	1
10	4GS-50.1-2	Washer	1	23	4GS-50.1-4	Harness	1	36			
11	4GS-50.1-10	Shaft	1	24	4GS-50.1-19	felt	1	37			
12	4GS-50.1-11	Gear	1	25	4GS-50.1-14	Harness φ5	2	38			
13	6MF-30.1-4	Pin	2	26	4GS-50.1-18	Screw	2	39			

MACHINE SPARE PARTS LIST KM0406260 ~~M-A~~

1/2



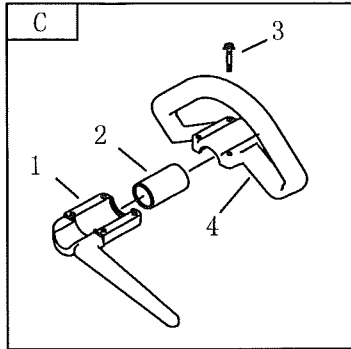
NO.	PART NO.	PART NAME	QTY.
A	CG260A. 1A	Clutch Comp.	
1	CG260A. 1A-2	Clutch Drum Comp.	1
2	GB/T893.1	Stop Ring 35	1
3	GB/T276	Bearing 6202-2RZ/P6	1
4	GB/T894.1	Stop Ring 15	1
5	CG261. 1-1	Linker	1
6	CG305F. 14-2	Rubber Cover	1
7	GB/70+GB93+GB97	Screw M5×12	1
8	GB/70+GB93+GB97	Screw M5×25	2
9	CG305F. 14-4	Clamp A	1
10	CG305F. 14-3	Clamp B	1
11	GB/70+GB93+GB97	Screw M6×20	4



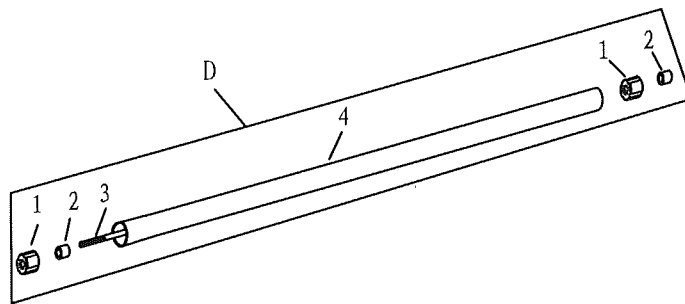
NO.	PART NO.	PART NAME	QTY.	NO.	PART NO.	PART NAME	QTY.
J	SG230. 1	Lever Ass'y		7-1	SG230. 1. 2E. 1	Stop Line	1
1	SG230. 1-1	Box, Right	1	7-2	GB/T845	Screw ST2. 9×13	1
2	GB/T845	Screw ST3. 5×19	5	7-3	SG230. 1. 2-1	Touch Reed	1
3	GB/T70. 1	Screw M5×18	2	7-4	SG230. 1. 2-2	Guide Seat	1
4	SG230. 1-5	Throttle Lever	1	7-5	SG230. 1. 2-3	Stop Switch	1
5	CG260. 2. 2D	Cable Comp.	1	8	SG230. 1-2	Box, Left	1
6	BG328A-2	Tube	1	9	SG230. 1-6	Spring	1
7	SG230. 1. 2E	Stop Button comp.		10	SG230. 1-4	Safety Lever	1

MACHINE SPARE PARTS LIST KM0406260

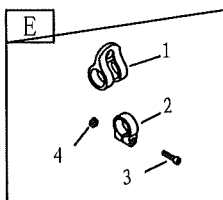
2/2



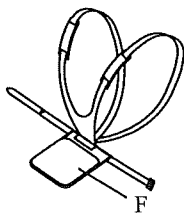
NO.	PART NO.	PART NAME	QTY.
C	CG245Q. 11	Handle Comp.	
1	CG245Q. 11.1	Handle Cover	1
2	BG330-CE. 1-2	Rubber Cover	1
3	CG245Q. 11-1	Handle	1
4	1E40F-5A-CE-4	Screw M5×30	4



NO.	PART NO.	PART NAME	QTY.
D	4GS-50. 3	Pipe Comp.	
1	BG-328. 9. 4-5	Rubber Cover	6
2	BG-328. 9. 4-4	Oil-bearing	6
3	4GS-50. 3-1	Drive Shaft	1
4	4GS-50. 3-2	Pipe	1

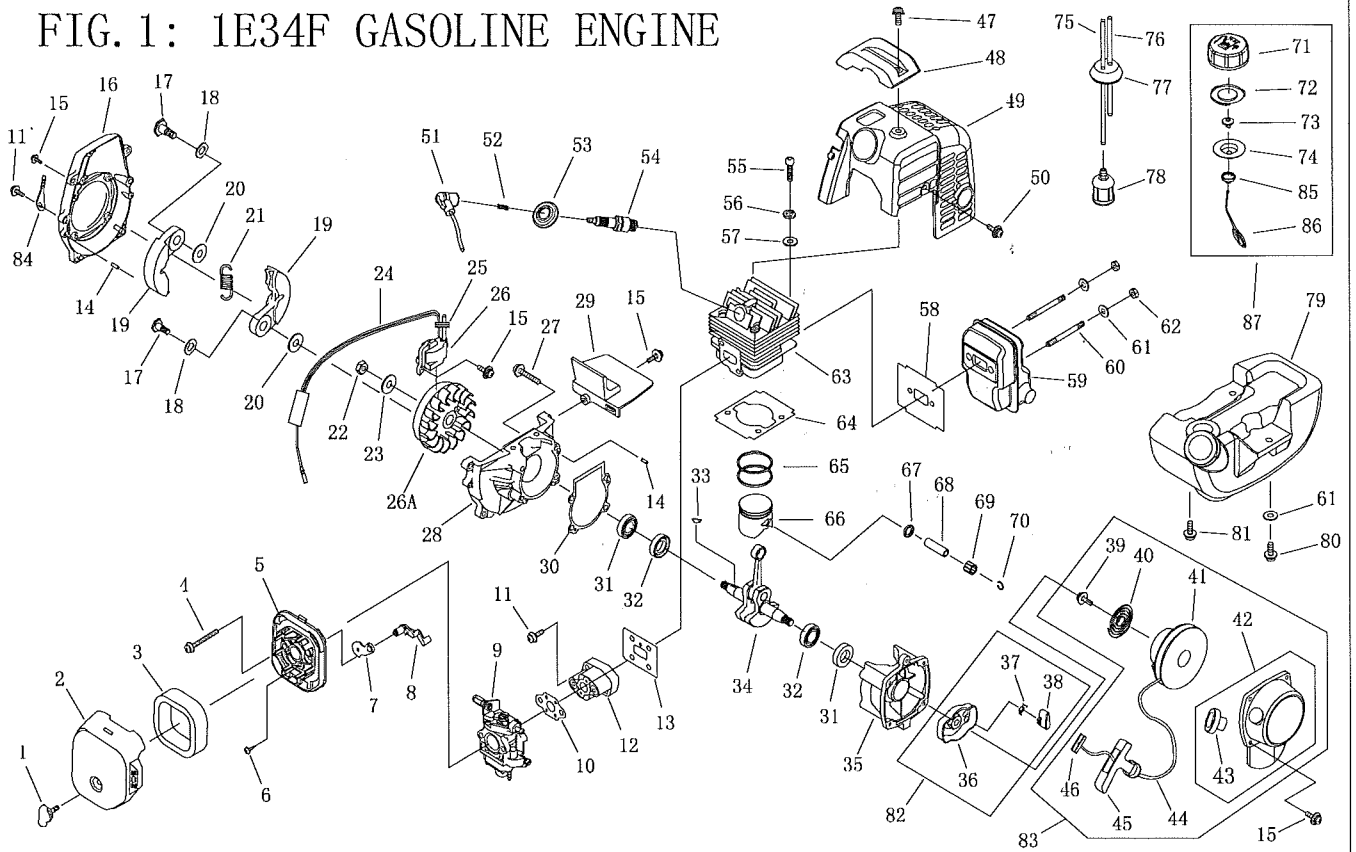


NO.	PART NO.	PART NAME	QTY.
D	CG260. 3	Holder Ass'y	
1	CG260. 3. 1	Harness Clamp	1
2	CG260. 3-1	Clamp	1
3	GB/T70. 1	Screw M5×20	1
4	GB/T889. 1	Nut M5	1



NO.	PART NO.	PART NAME	QTY.
F	CG260-CE. 1	Harness Ass'y	1

FIG. 1: 1E34F GASOLINE ENGINE



NO.	PART NO.	PART NAME	QTY.	NO.	PART NO.	PART NAME	QTY.	NO.	PART NO.	PART NAME	QTY.
1	1E34F. 1. 2	SCREW	1	30	1E34F. 7-2	CRANK CASE GASKET	1	60	1E34F-14	BOLT	2
2	1E34F. 1-4	CLEANER OUTSIDE COVER	1	31	1E36F. 2	OIL SEAL	2	61	GB/T96	WASHER 5	3
3	1E34F. 1-1	CLEANER ELEMENT	1	32	GB/T276	BALL BEARING 6001/P5	2	62	GB/T6187. 1	NUT M5	2
4	GB/T9074. 4	SCREW M5×55	2	33	1E40FP-3Z. 3-1	KEY	1	63	1E34F-8	CYLINDER	1
5	1E34F. 1. 1	CLEANER INSIDE COVER	1	34	1E34F. 6. 1	CRANK SHAFT COMP.	1	64	1E34F-9	CYLINDER WASHER	1
6	GB/T845	SCREW ST4. 2×12-F-H	1	35	1E34F. 7-3	REAR HALF CRANK CASE	1	65	1E34F. 6-5	PISTON RING	2
7	1E34F. 1-3	CHOKE	1	36	1E34F. 8. 1	STARTER PULLEY ASS'Y	1	66	1E34F. 6-6	PISTON	1
8	1E34F. 1-2	CHOKE HANDLE	1	37	1E34F. 8-2	STARTER PAWL SPRING	1	67	1E34F. 6-1	STOP RING	2
9	1E34F. 13	CARBURETOR	1	38	1E34F. 8-1	STARTER PAWL	1	68	1E34F. 6-3	PISTON PIN	1
10	1E34F-1	GASKET	1	39	GB/T9074. 6	SCREW M5×10	1	69	1E34F. 6-4	NEEDLE BEARING	1
11	GB/T9074. 4	SCREW M5×20	6	40	1E34F. 11-1	RECOIL SPRING	1	70	1E34F. 6-2	PISTON PIN CIRCLLET	2
12	1E34F. 4	INLET MANIFOLD	1	41	1E34F. 11-2	STARTER ROPE REEL	1	71	1E32FL. 6. 2-1	FUEL TANK LID	1
13	1E34F-2	CYLINDER WASHER	1	42	1E34F. 11. 1	RECOIL STARTER BODY	1	72	CG420. 1. 3. 1-2	GASKET	1
14	GB/T119	ANNUL B3×10	4	43	1E34F. 11. 1-1	ROPE GUIDE	1	73	EB-415. 4. 1. 1-1	AIRINLET MOUTH	1
15	GB/T9074. 4	SCREW M4×16	9	44	1E34F. 11-3	ROPE	1	74	1E32FL. 6. 2-2	INSIDE COVER	1
16	1E34F-5	FAN COVER	1	45	1E36F. 1-1	STARTER HANDLE	1	75	1E34F. 9. 2-2	OUTLET FUEL PIPE	1
17	1E34F-12	CLUTCH STEP SCREW	2	46	1E36F. 1-5	GASKET	1	76	1E34F. 9. 2-1	INLET FUEL PIPE	1
18	1E34F-13	WASHER	2	47	GB/T9074. 4	SCREW M5×14	1	77	1E36FF. 8. 1-1	PRIMARY CORD GROMMET	1
19	1E34F. 10. 1	CLUTCH SHOE COMP.	2	48	1E34F-6	COVER	1	78	1E34F. 9. 2-3	CLEANER	1
20	1E34F-11	WASHER	2	49	1E34F. 3	COVER	1	79	1E34F. 9. 1	FUEL TANK	1
21	1E34F. 10-1	CLUTCH SPRING	1	50	GB/T9074. 4	SCREW M4×12	1	80	GB/T9074. 3	SCREW M5×16	1
22	GB/T6171	NCT M8×1	1	51	1E34F. 5-2	PLUG CAP	1	81	GB/T9074. 4	SCREW M5×16	2
23	GB/T97. 1	WASHER 8	1	52	1E40F-3A. 8-2	CLICK SPRING	1	82	1E34F. 8	STARTER PULLEY ASS'Y	1
24	QQ-1	STOP CORD COMP.	1	53	1E34F. 5-3	PLUG COVER	1	83	1E34F. 11	STARTER	1
25	1E34F. 5-1	PRIMARY CORD GROMMET	1	54	RCJ6Y (CHAMPION)	SPARK PLUG	1	84	1E36FF-11	FLASH PAN	1
26	UK-08922	MAGNETO STATOR	1	55	GB/T70. 1	SCREW M5×20	4	85	1E32FL. 6. 2-3	LID	1
26A	UK-08922	MAGNETO ROTOR	1	56	GB/T93	WASHER 5	4	86	1E32FL. 6. 2-4	CHAIN	1
27	GB/T9074. 4	SCREW M5×25	4	57	GB/T848	WASHER 5	4	87	1E32FL. 6. 2	FUEL TANK LID COMP.	1
28	1E34F. 7-1	FRONT HALF CRANK CASE	1	58	1E34F-3	GASKET	1				
29	1E34F-4	GUIDE PLATE	1	59	1E34F. 2	MUFFLER COMP.	1				